



# Marine Arch Fender

 **ZHIYOU MARINE**  
Marine & Offshore Equipment Supplier

Shanghai Zhiyou Marine & Offshore Equipment Co., Ltd

Web: [www.marineoutfittings.com](http://www.marineoutfittings.com)

Email: [info@marineoutfittings.com](mailto:info@marineoutfittings.com)

Tel: +86 21 5645 2367

## Brief

Marine arch type fenders are tough and reliable, simple and long lasting. Providing trouble-free service for a wide variety of berthing even under the most severe conditions. They have been consistently popular for many years. Their rugged construction, simplicity and versatility suit them to a wide variety of berths and wharves.

Arch rubber fender is particularly useful for vessels with high allowable hull pressures and for locations where mounting space is limited. It can be fitted vertically or horizontally. Based on the same unit weight of rubber, the energy absorption of arch type fender is 2.3 times higher than D type fender, 3.5 times higher than the cylindrical rubber fender.

Marine arch fender also can be bolted with UHMW-PE face pads, combining resilience with low-friction, non-marking properties. This design can reduce the torsion the bottom of the fender dramatically, then prolong the life-span of rubber fender body. The UHMW-PE face pads have various colors, and can be replaced easily.

## Specification

Available in many sizes from 150mm to 1000mm high and in lengths of 1000mm to 3500mm.

Choice of marine panels design and non marine panels design.

Material of accessories with hot galvanizing or stainless steel.

Other requirements.

## Features

Rugged single piece molding for long service life.

Strong bolting arrangement is easy and quick to install.

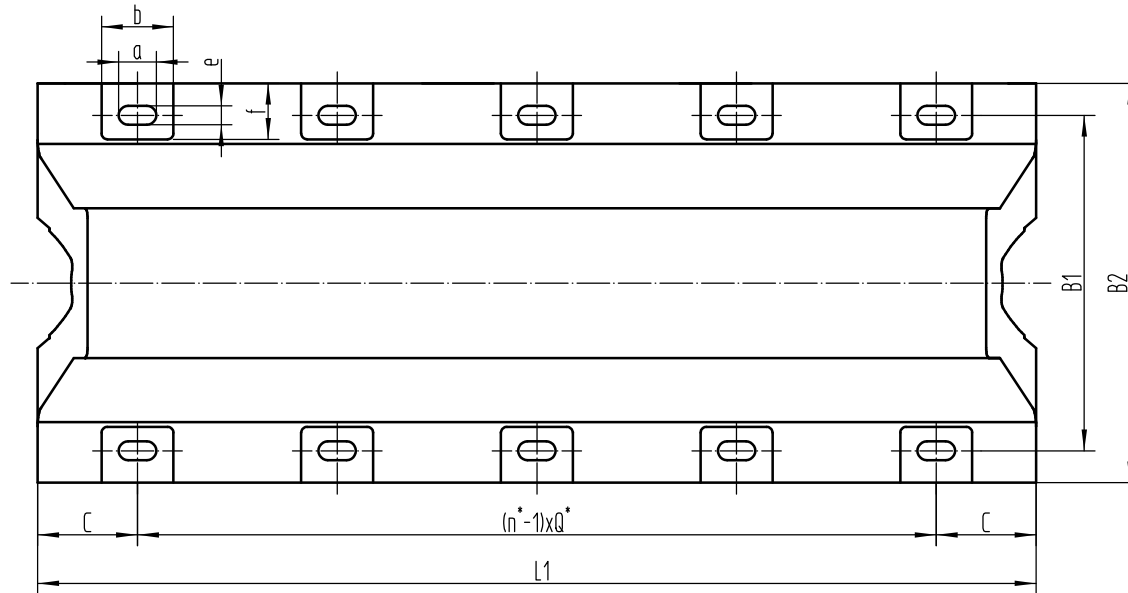
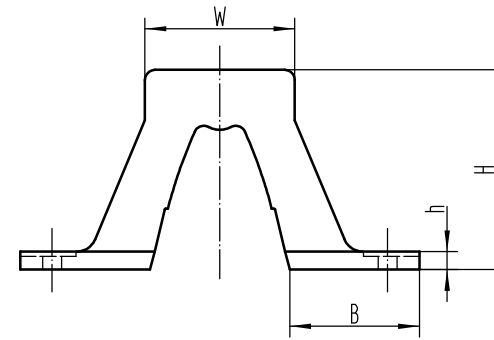
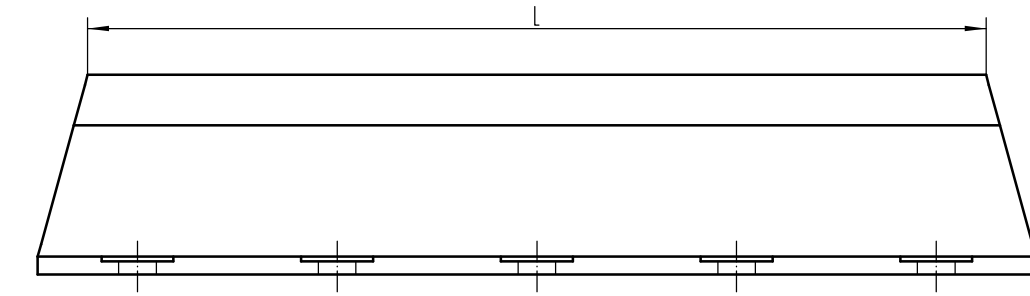
Excellent shear resistance means eliminates weight chains.

Large range of sizes, lengths and energy indices.

Non-standard lengths, energy index and end profile available.



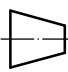
## Dimensions

The dimensions please see the drawing enclosed. Customized solution or any other requirements please [contact us](#).



$n^*$ : Quantity of bolt holes.

$Q^*$ : Distance of adjacent bolt holes.

1		
Rev	Description	Date
Note	All dimensions are in millimeters unless otherwise specified.	
 Shanghai Zhiyou Marine & Offshore Equipment Co., Ltd Room 405, Fudan Software Park, 188 Changyi Road, Shanghai China. Tel: +86-21-5645-2367 Email: sales@zhiyoumarine.com info@marineoutfittings.com Web: www.zhiyoumarine.com www.marineoutfittings.com		
Dwg Name	Marine Arch Rubber Fender	
 	Scale	1:10 @A3
	Dwg No.	ZY-MRB-A
	Sheet	1/2

The drawings are for reference only, not used as production drawings. 此圖紙僅供參考，不作為生產圖紙。

Model	H	L	L1	C	Q*	n*	W	B1	B2	B	h	a	b	e	f
MAF-150x1000	150	1000	1075	110	855	2	98	240	300	96	22.5	50	95	25	55
MAF-150x1500		1500	1575	112.5	675	3									
MAF-150x2000		2000	2075	107.5	620	4									
MAF-150x2500		2500	2575	110	785	4									
MAF-150x3000		3000	3075	107.5	715	5									
MAF-200x1000	200	1000	1100	120	860	2	145	320	400	128	30	58	105	29	75
MAF-200x1500		1500	1600	120	680	3									
MAF-200x2000		2000	2100	120	620	4									
MAF-200x2500		2500	2600	122.5	785	4									
MAF-200x3000		3000	3100	120	715	5									
MAF-250x1000	250	1000	1125	130	865	2	164	410	500	160	30	64	125	32	90
MAF-250x1500		1500	1625	132.5	680	3									
MAF-250x2000		2000	2125	132.5	620	4									
MAF-250x2500		2500	2625	127.5	790	4									
MAF-250x3000		3000	3125	132.5	715	5									
MAF-300x1000	300	1000	1150	140	870	2	225	490	600	195	33	70	140	35	105
MAF-300x1500		1500	1650	140	685	3									
MAF-300x2000		2000	2150	137.5	625	4									
MAF-300x2500		2500	2650	140	790	4									
MAF-300x3000		3000	3150	145	715	5									
MAF-300x3500		3500	3650	140	674	6									
MAF-400x1000	400	1000	1200	150	900	2	300	670	800	260	40	82	165	41	120
MAF-400x1500		1500	1700	150	700	3									
MAF-400x2000		2000	2200	147.5	635	4									
MAF-400x2500		2500	2700	150	800	4									
MAF-400x3000		3000	3200	150	725	5									
MAF-400x3500		3500	3700	150	680	6									
MAF-500x1000	500	1000	1250	160	930	2	375	840	1000	325	45	94	180	47	140
MAF-500x1500		1500	1750	160	715	3									
MAF-500x2000		2000	2250	157.5	645	4									
MAF-500x2500		2500	2750	160	810	4									
MAF-500x3000		3000	3250	165	730	5									
MAF-500x3500		3500	3750	160	686	6									
MAF-600x1000	600	1000	1300	170	960	2	450	1010	1200	390	54	100	195	50	160
MAF-600x1500		1500	1800	170	730	3									
MAF-600x2000		2000	2300	167.5	655	4									
MAF-600x2500		2500	2800	170	820	4									
MAF-600x3000		3000	3300	170	740	5									
MAF-600x3500		3500	3800	170	692	6									
MAF-800x1000	800	1000	1400	180	1040	2	600	1340	1600	520	72	136	270	68	260
MAF-800x1500		1500	1900	180	770	3									
MAF-800x2000		2000	2400	180	680	4									
MAF-800x2500		2500	2900	182.5	845	4									
MAF-800x3000		3000	3400	180	760	5									
MAF-1000x1000	1000	1000	1400	180	1040	2	750	1680	2000	650	90	136	290	68	300
MAF-1000x1500		1500	1900	180	770	3									
MAF-1000x2000		2000	2400	180	680	4									



**ZHIYOU MARINE**

Shanghai Zhiyou Marine & Offshore Equipment Co., Ltd  
 Room 405, Fudan Software Park, 188 Changyi Road, Shanghai China.  
 Tel: +86-21-5645-2367  
 Email: sales@zhiyoumarine.com info@marineoutfittings.com  
 Web: www.zhiyoumarine.com www.marineoutfittings.com

1			Dwg Name	Marine Arch Rubber Fender			
Rev	Description	Date		Scale	1:1 @A3	Dwg No.	ZY-MRB-A
Note	All dimensions are in millimeters unless otherwise specified.			Sheet	2/2		

The drawings are for reference only, not used as production drawings. 此圖紙僅供參考，不作為生產圖紙。